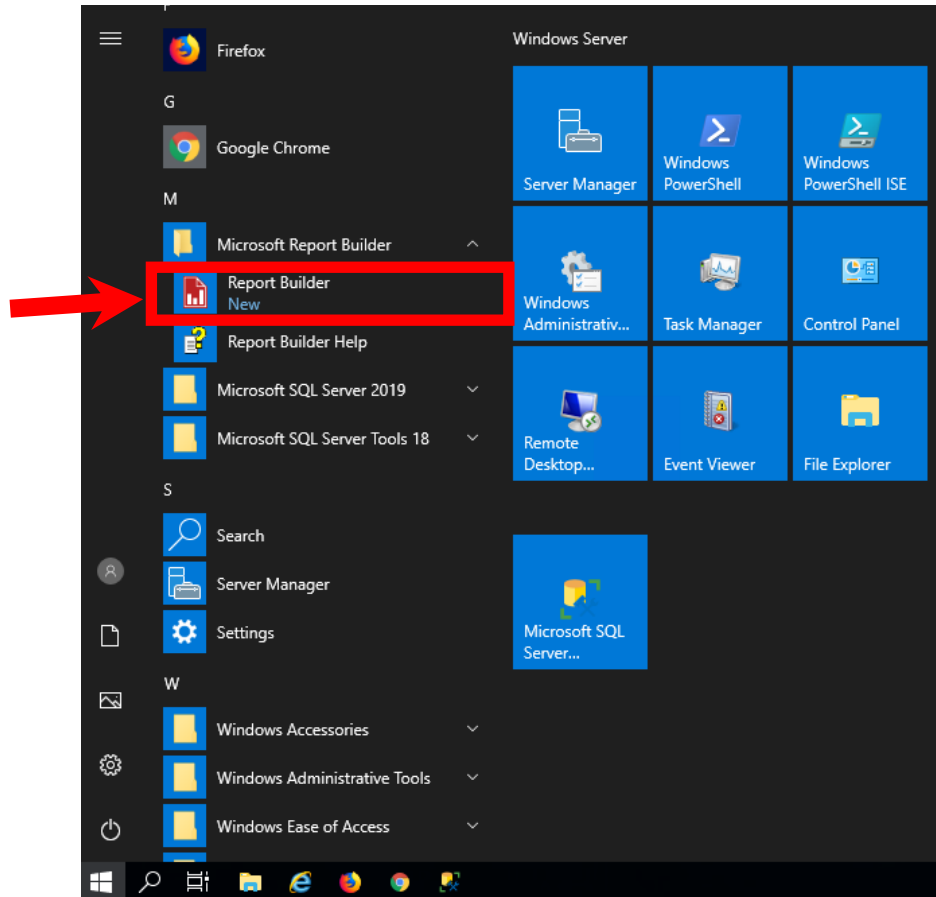
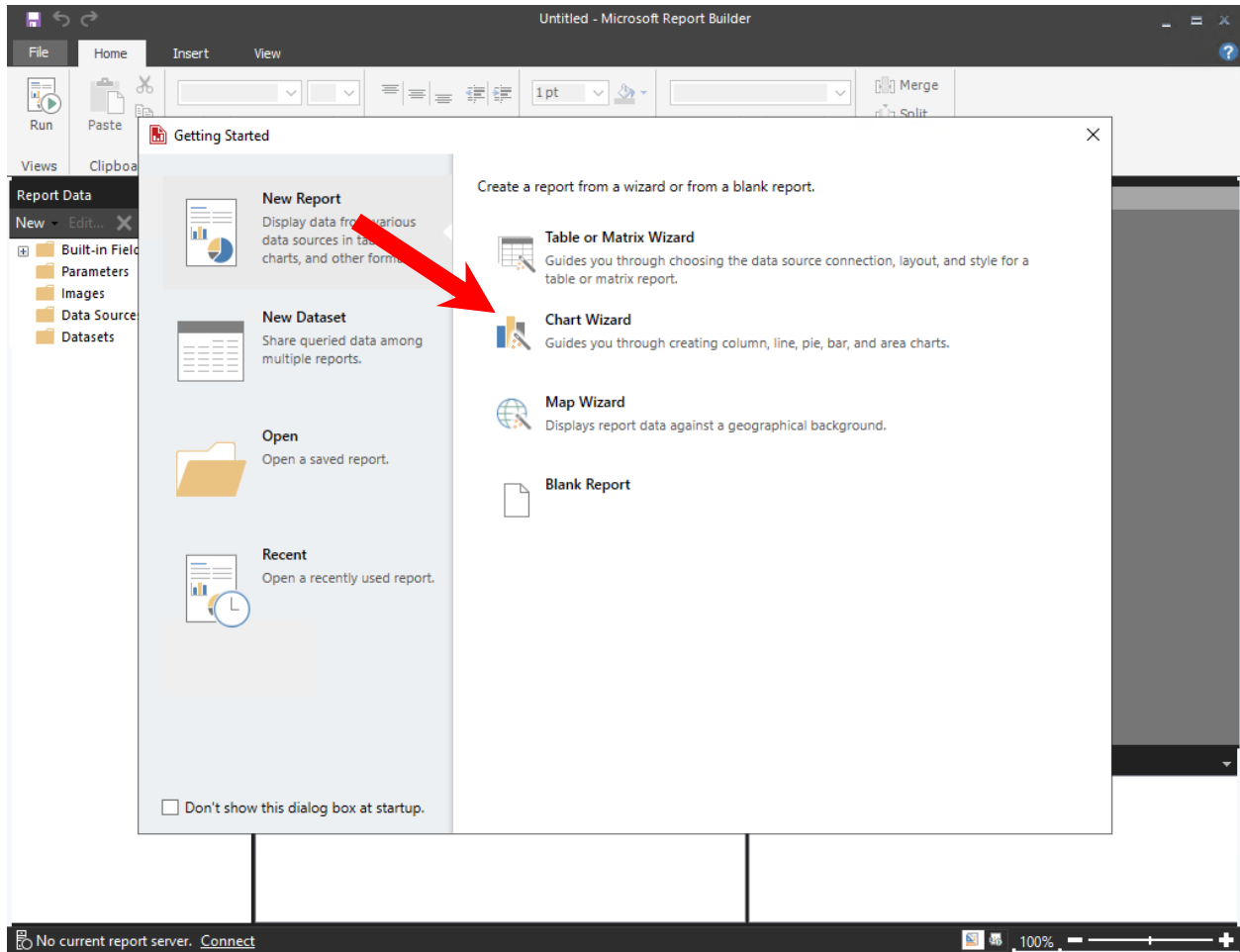


CREATING A BIKESTORES LINE CHART REPORT

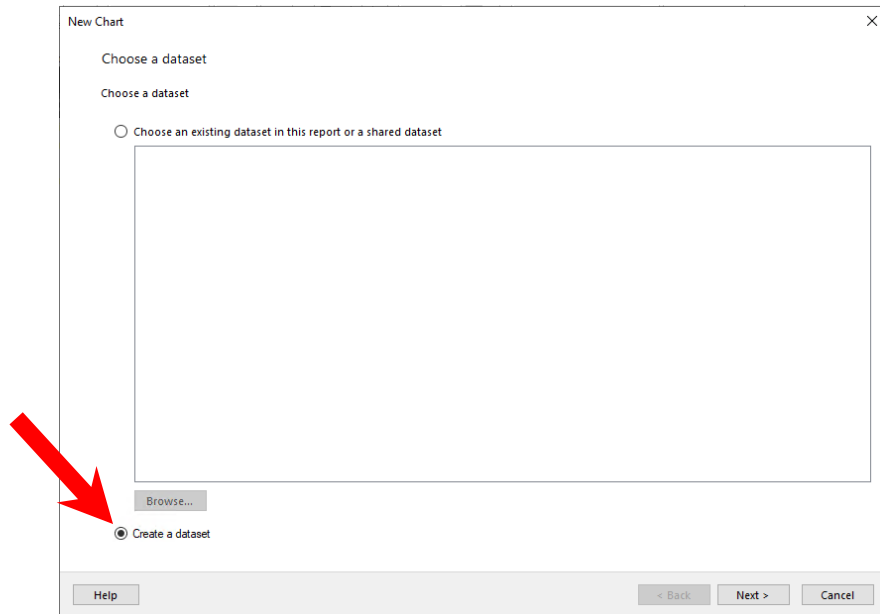
- [1] To start the Microsoft Report Builder application, access the Windows Start menu and select the Microsoft Report Builder folder.



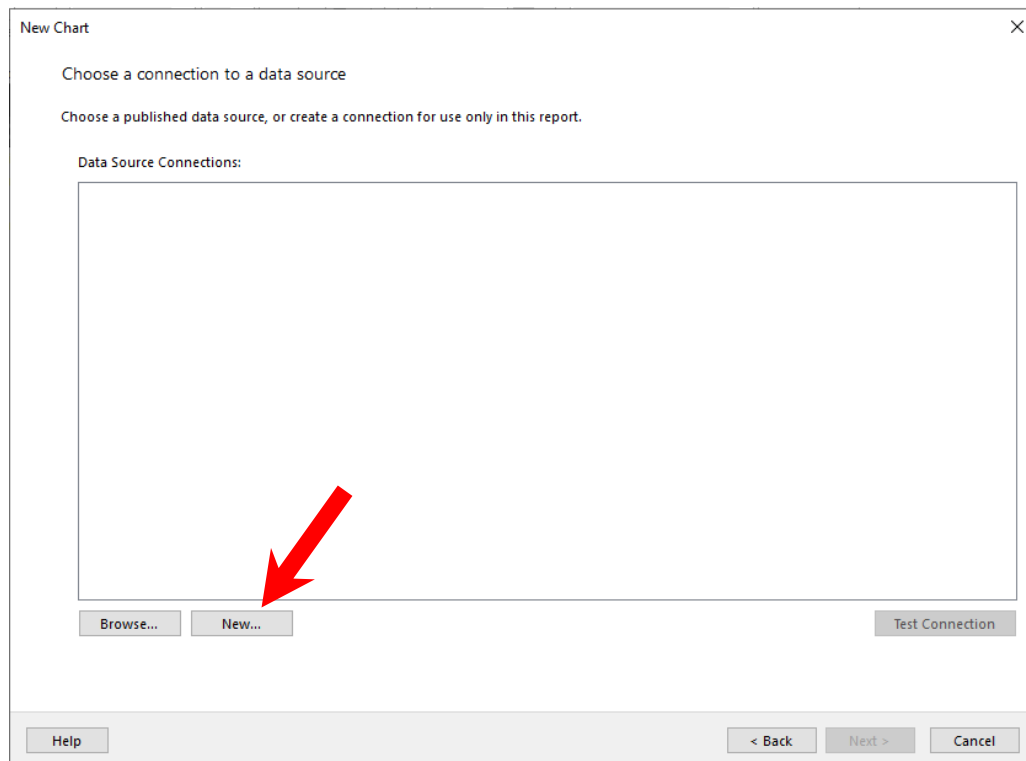
[2] You'll then see the *Getting Started* screen in Microsoft Report Builder. Click on the *Chart Wizard* option.



- [3] You'll be presented with the *New Chart* screen. Click on the “*Create a dataset*” option and click the **NEXT** button to continue.



- [4] You will then see a screen asking for you the “*Choose a connection to a data source.*” Click on the **NEW** button.



- [5] You will then see the *Data Source Properties* screen. You can leave the *Name* value as is or provide a preferred name. In the *Connection String* field, enter the following value:

Data Source=localhost\SQLEXPRESS

Click on the **TEST CONNECTION** button to verify the connection string. You should receive a “*Connection created successfully*” message. Click on the **OK** button close out the prompt. Then click on the **OK** button on the *Data Source Properties* screen to complete the data source specification.

Data Source Properties

General
Credentials

Change name, type, and connection options.

Name:
DataSource1

Use a shared connection or report model
 Use a connection embedded in my report

Select connection type:
Microsoft SQL Server

Connection string:
Data Source=localhost\SQLEXPRESS

Build...
fx

Test Connection

Use single transaction when processing the queries

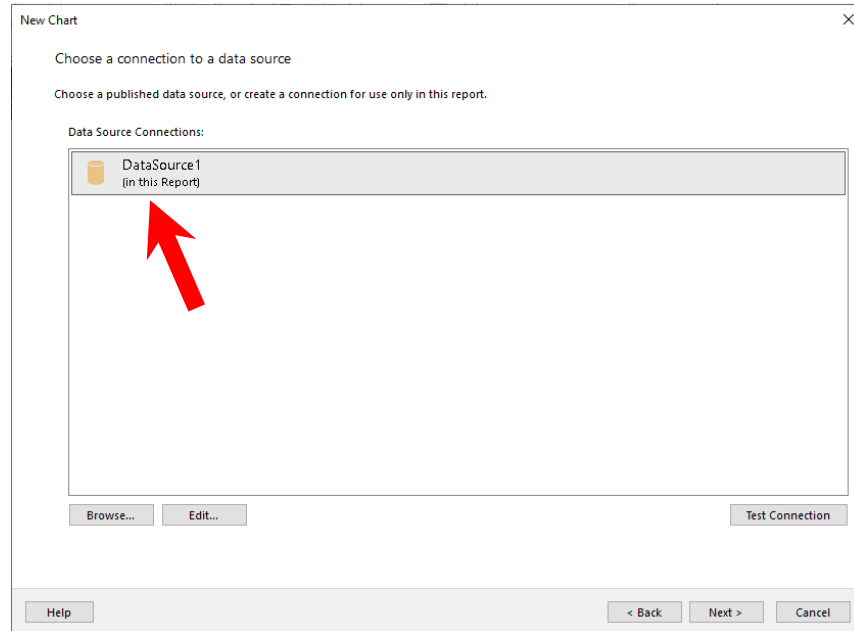
Help OK Cancel

Test Connection Result

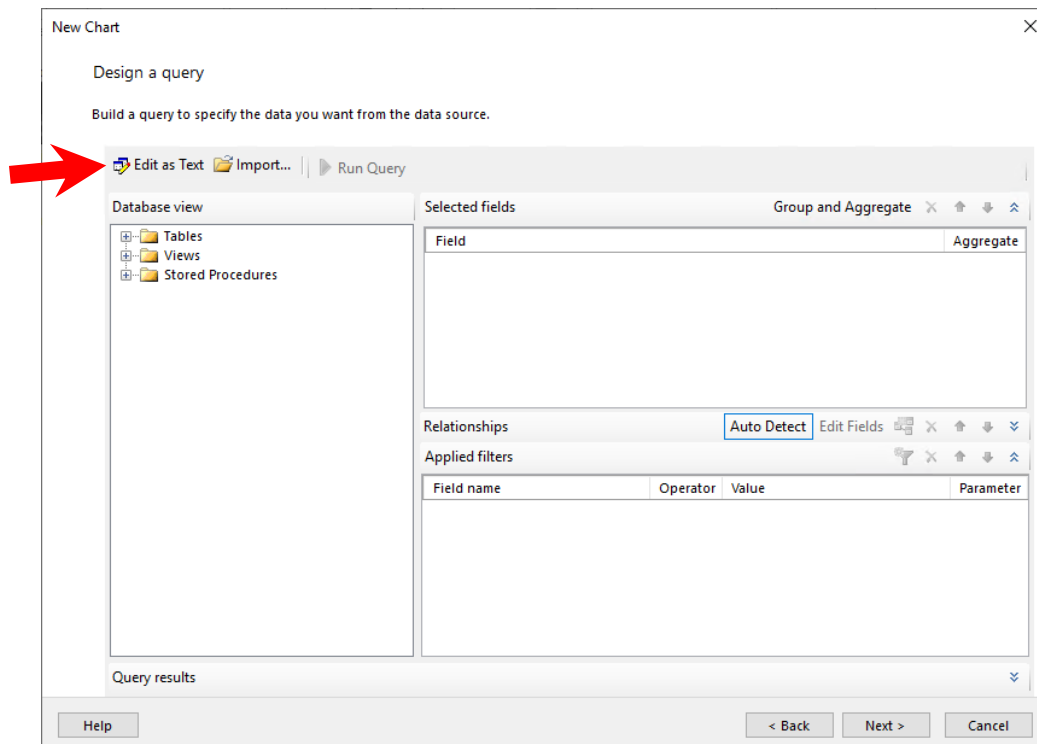
Connection created successfully.

OK

- [6] You'll be returned to the “*Choose a connection to a data source screen.*” Make sure the new data source entry is highlighted and then click on the **NEXT** button to continue.



- [7] You'll then see the “*Design a query*” screen. Click on the “*Edit as Text*” option in the top left portion of the screen.

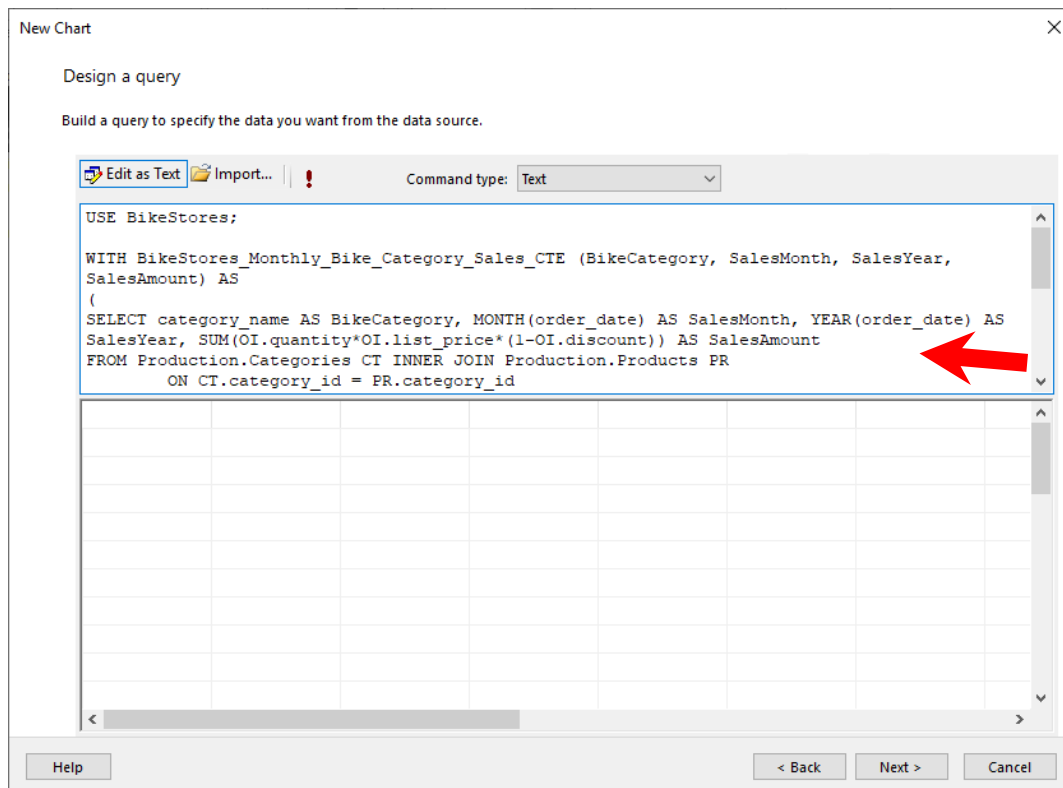



[8] In the provided text field area, enter the following SQL statements:

```
USE BikeStores;

WITH BikeStores_Monthly_Bike_Category_Sales_CTE (BikeCategory,
SalesMonth, SalesYear, SalesAmount) AS
(
SELECT category_name AS BikeCategory, MONTH(order_date) AS SalesMonth,
YEAR(order_date) AS SalesYear, SUM(OI.quantity*OI.list_price*(1-
OI.discount)) AS SalesAmount
FROM Production.Categories CT INNER JOIN Production.Products PR
ON CT.category_id = PR.category_id
INNER JOIN Sales.Order_Items OI
ON OI.product_id = PR.product_id
INNER JOIN Sales.Orders OD
ON OD.order_id = OI.order_id
GROUP BY category_name, MONTH(order_date), YEAR(order_date)
)

SELECT BikeCategory, SalesMonth, SalesAmount
FROM BikeStores_Monthly_Bike_Category_Sales_CTE
WHERE SalesYear = 2016
ORDER BY BikeCategory, SalesMonth;
```







- [9] Click on the exclamation point () to execute and test the entered SQL code. A total of 71 records should be returned from the SQL statements. Then click on the **NEXT** button to continue.

New Chart ×

Design a query

Build a query to specify the data you want from the data source.

 Edit as Text  Import...   Command type: Text

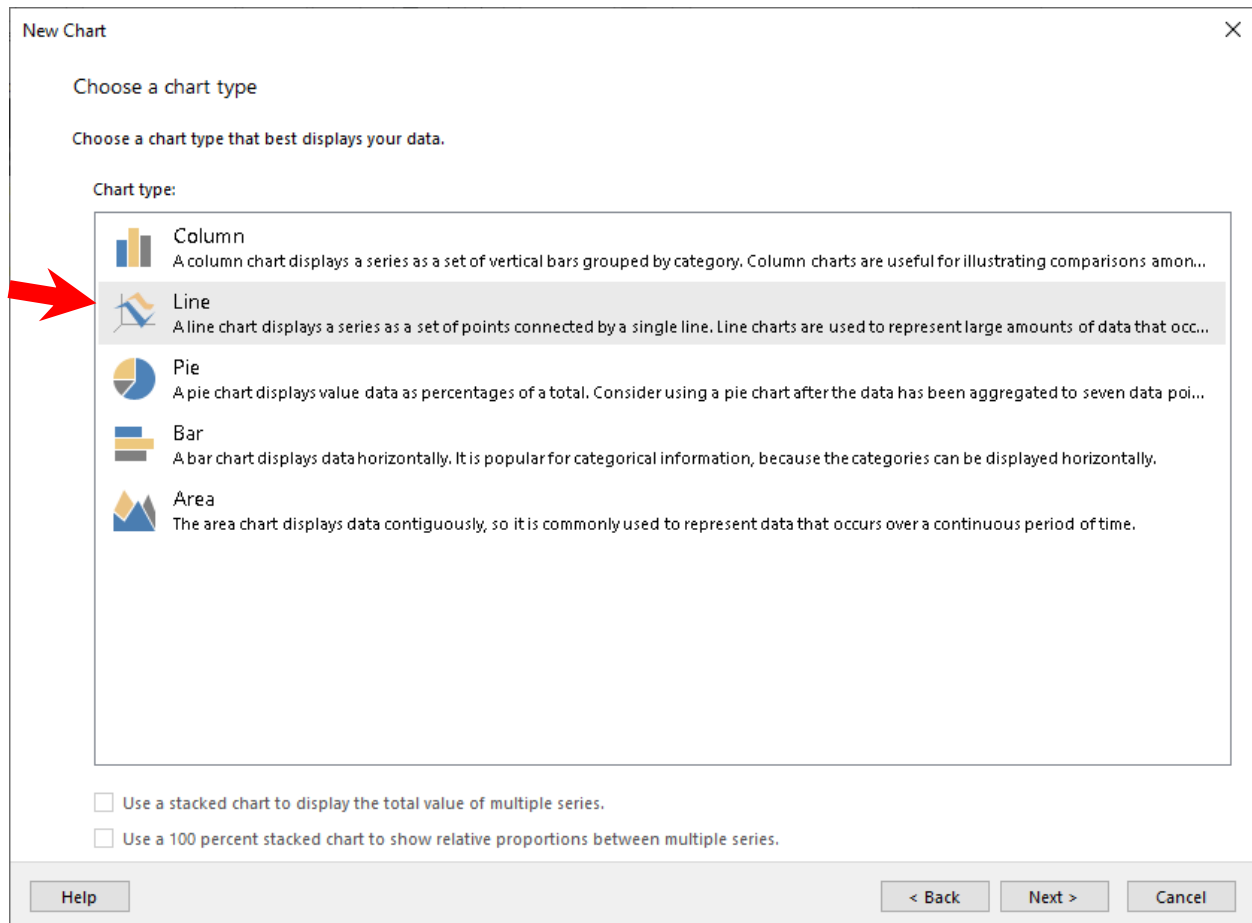
```
USE BikeStores;

WITH BikeStores_Monthly_Bike_Category_Sales_CTE (BikeCategory, SalesMonth, SalesYear,
SalesAmount) AS
(
SELECT category_name AS BikeCategory, MONTH(order_date) AS SalesMonth, YEAR(order_date) AS
SalesYear, SUM(OI.quantity*OI.list_price*(1-OI.discount)) AS SalesAmount
FROM Production.Categories CT INNER JOIN Production.Products PR
ON CT.category_id = PR.category_id
```

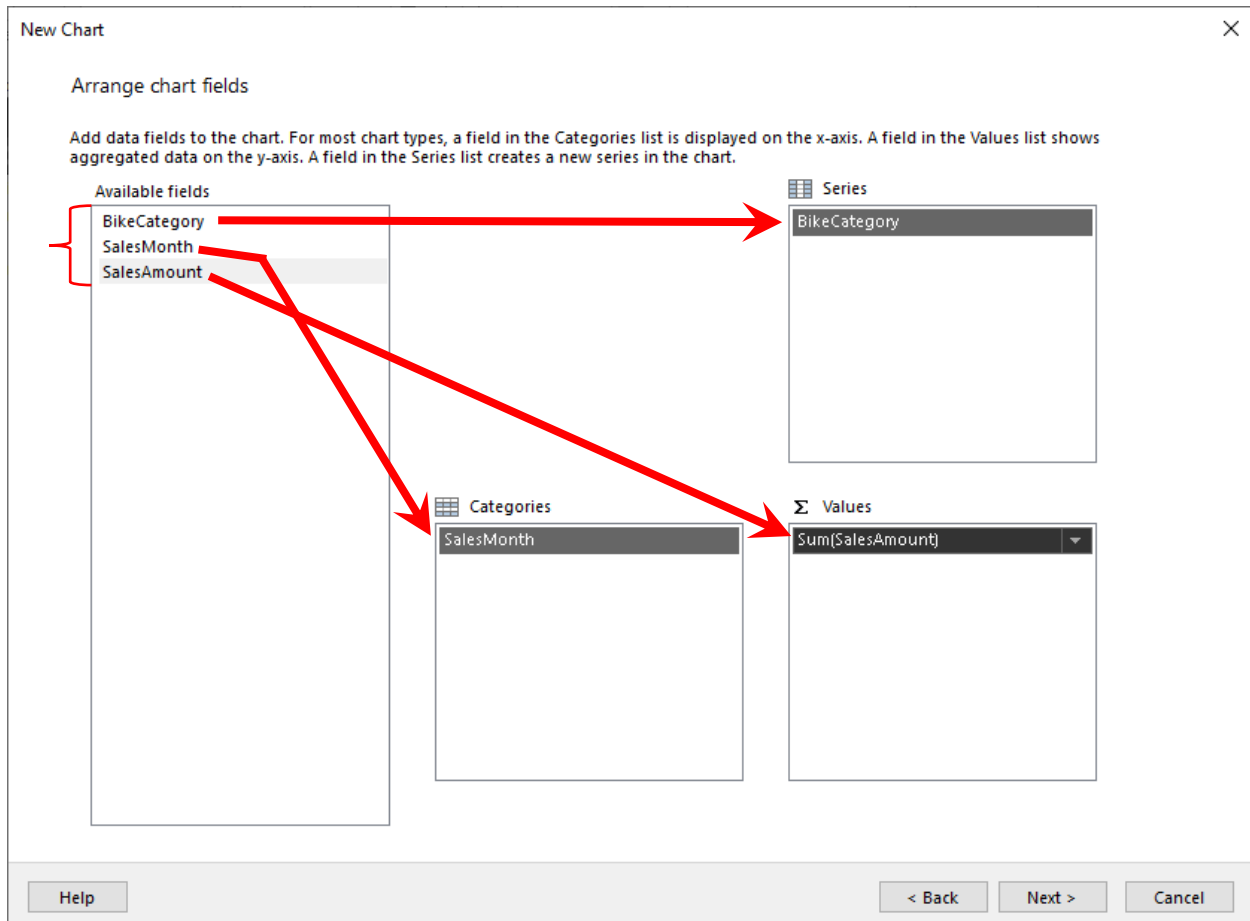
| BikeCategory | SalesMonth | SalesAmount |
|-------------------|------------|-------------|
| Children Bicycles | 1 | 7515.3313 |
| Children Bicycles | 2 | 11260.1055 |
| Children Bicycles | 3 | 5485.3026 |
| Children Bicycles | 4 | 4081.6518 |
| Children Bicycles | 5 | 5864.4879 |
| Children Bicycles | 6 | 5751.3946 |
| Children Bicycles | 7 | 5900.7892 |
| Children Bicycles | 8 | 9339.8631 |
| Children Bicycles | 9 | 8053.8133 |
| Children Bicycles | 10 | 11782.9798 |
| Children Bicycles | 11 | 4779.1290 |

Help < Back Next > Cancel

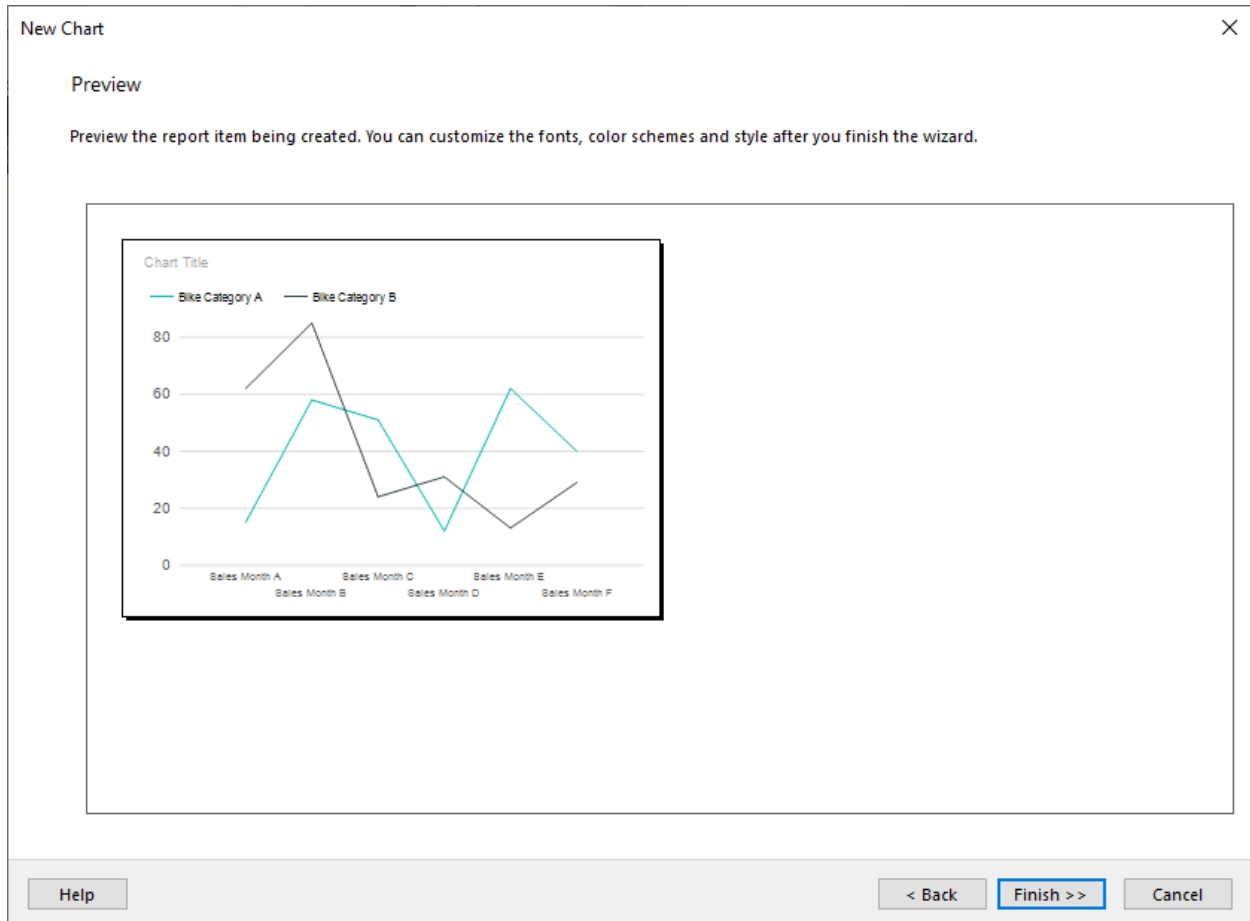
[10] You will then see the “*Choose a chart type*” screen. Select the *Line* option and then click on the **NEXT** button.



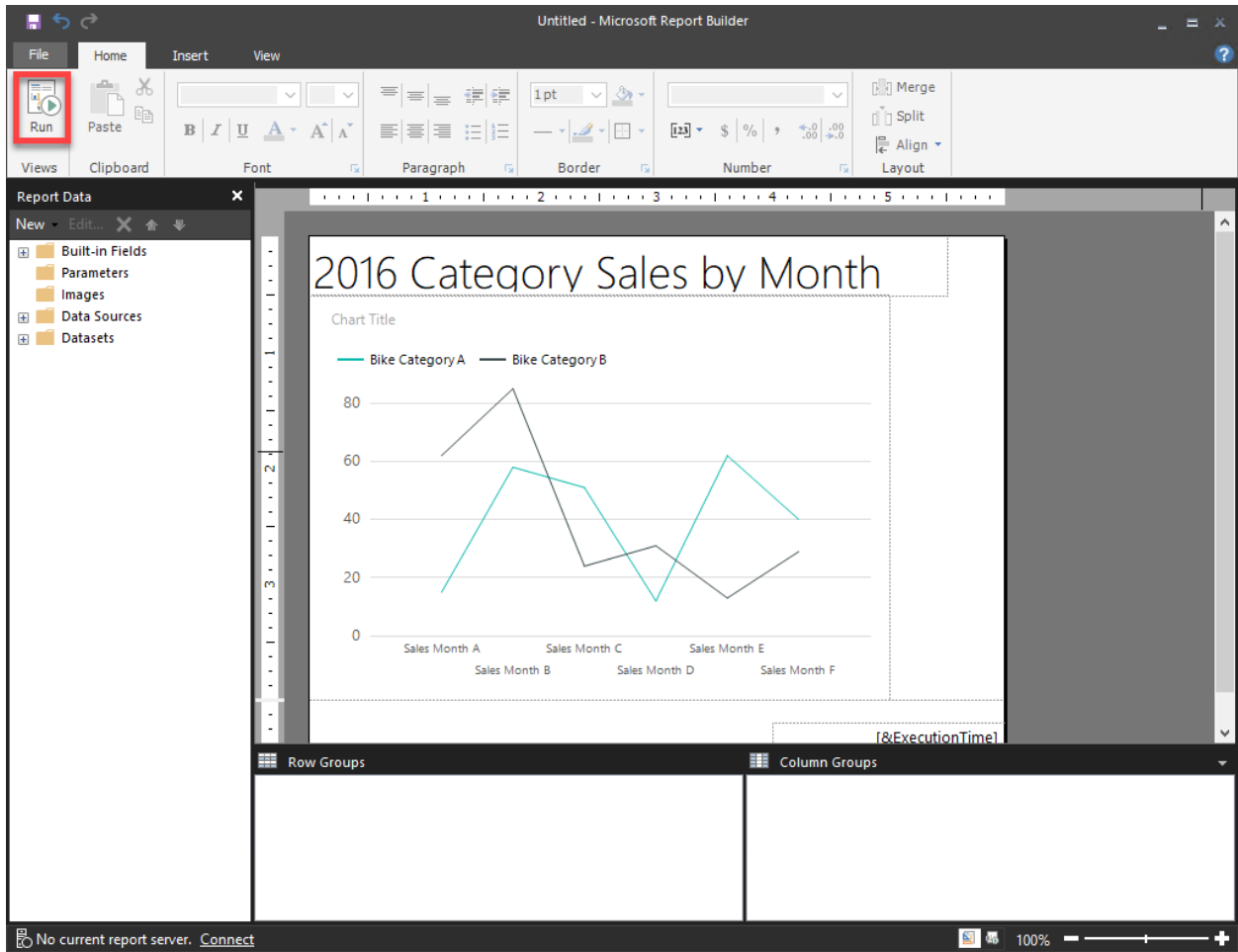
- [11] You will then be presented with the “*Arrange chart fields*” screen. Left-click on the *BikeCategory* item with your mouse and drag it to the *Series* area. Left-click on the *SalesMonth* item with your mouse and drag it to the *Categories* area. Left-click on the *SalesAmount* item with your mouse and drag it to the *Values* area. The item placement should look like what is presented below. Click on the **NEXT** button to continue.



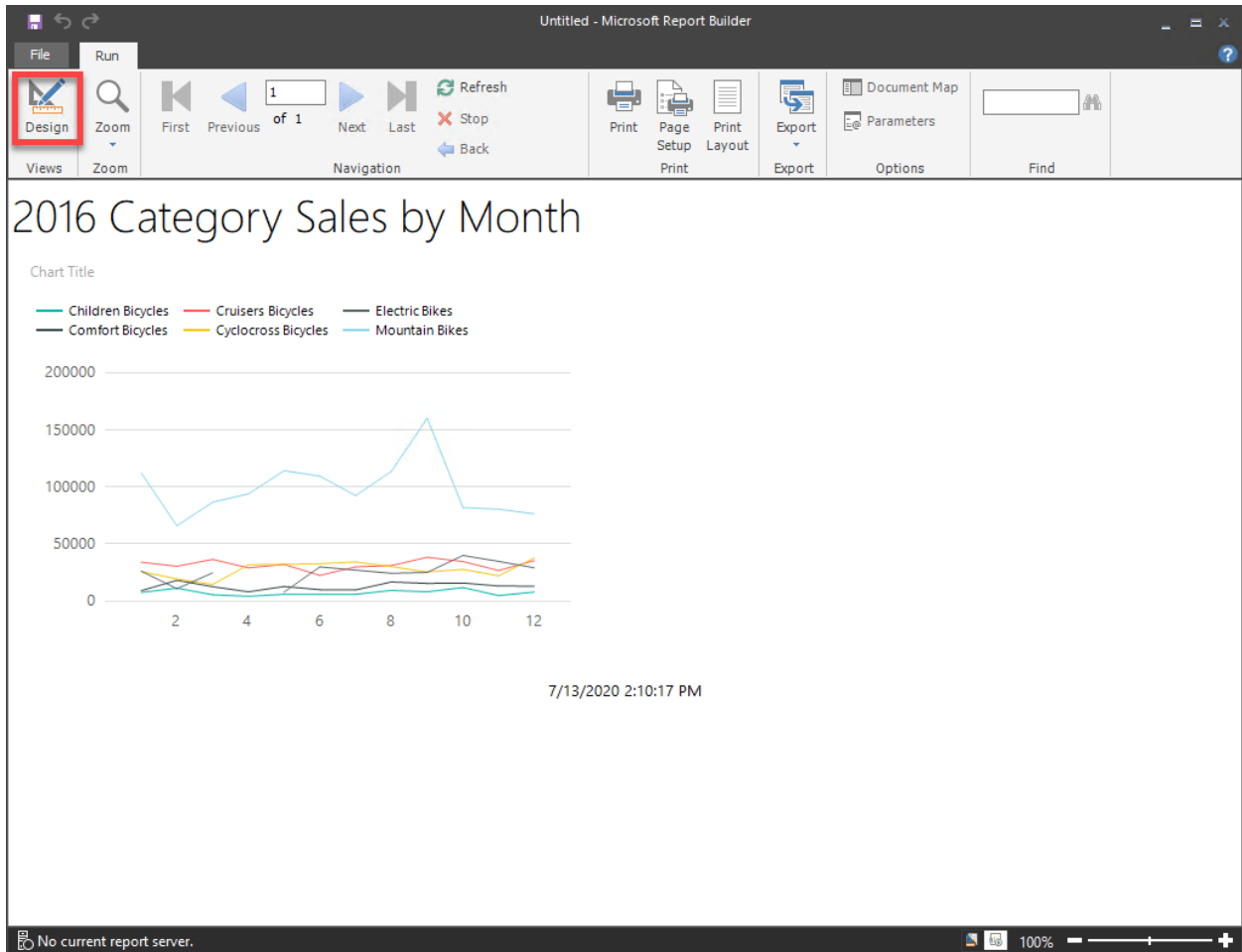
[12] You'll then see the "*Preview*" screen. Click on the **FINISH** button.



- [13] The configured report screen will then be presented in the main Report Builder window. Click on the **RUN** button in the upper left corner of the window to test out the report.



[14] The generated report should look similar to what is provided below. Take a screenshot of your generated report as proof of report completion for the assignment. Incorporate the screenshot into your assignment document. Then click on the **DESIGN** button in the upper left corner of the window to return to the main Report Builder screen.



- [15] Save the Report Builder file via **FILE-->SAVE AS** from the top menu. Provide an applicable file name for the Report Builder file. You can then exit from the Report Builder application.

