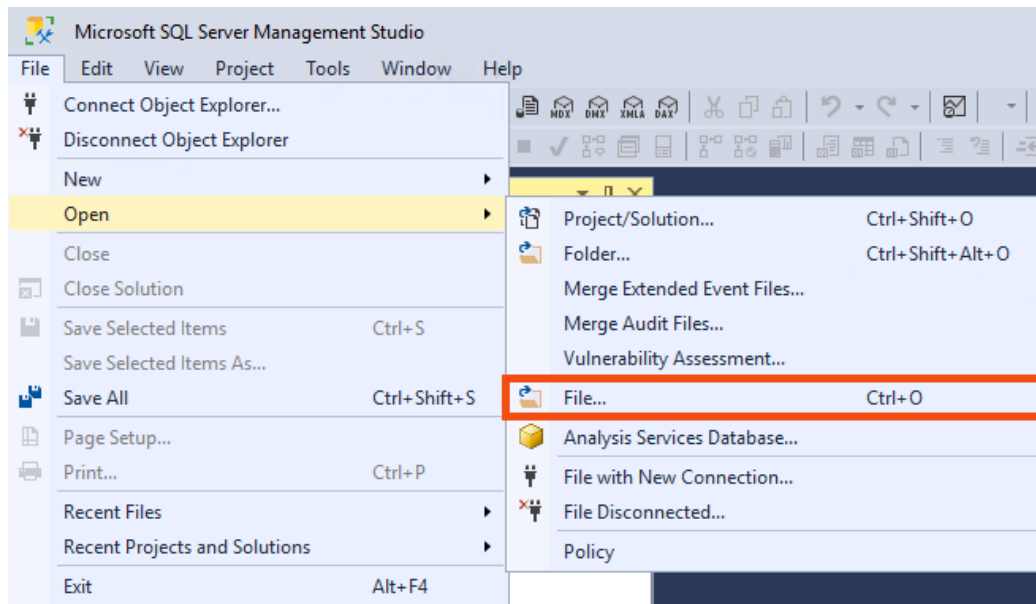
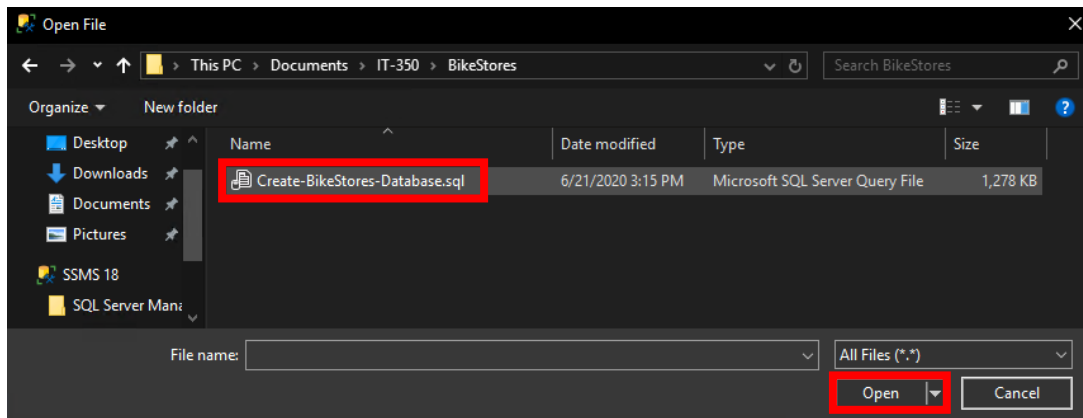


# Instructions for Establishing the BikeStores Database

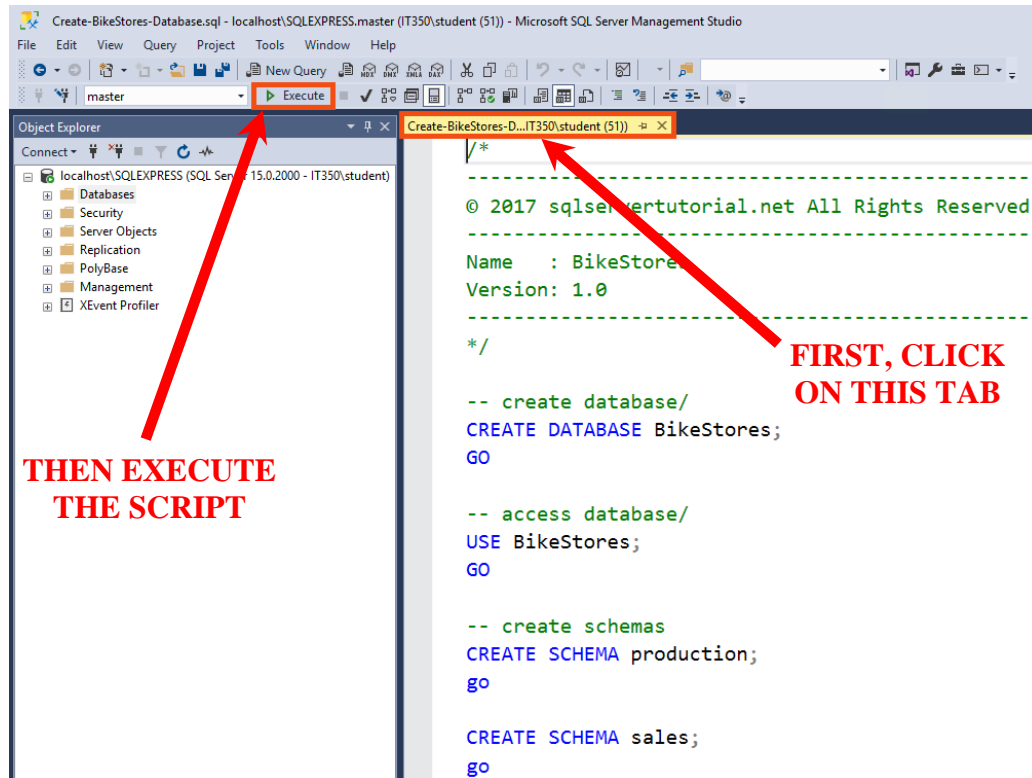
- [1] Download the **BikeStores** database creation script (*Create-BikeStores-Database.sql*) to an accessible location on the computer system hosting the Microsoft SQL Server software.
- [2] Open the *Microsoft SQL Server Management Suite* (SSMS) application. In the top menu, select **FILE** → **OPEN** → **FILE**.



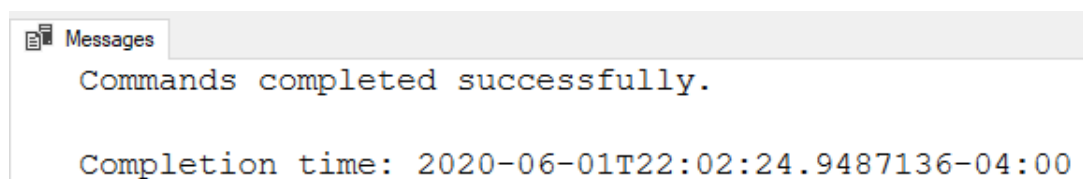
- [3] The **OPEN FILE** window will appear. Navigate to the computer folder/directory that contains the database creation script. Select the script file and then click on the **OPEN** button.



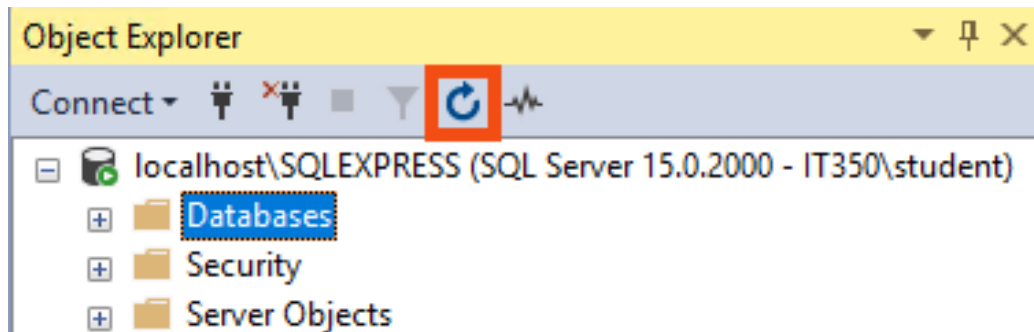
- [4] A query window will appear containing the contents of the database creation script. Click on the tab for the window to ensure it is the active window. Then click on the **EXECUTE** button to execute the database creation script. It may take one or more minutes for the script to complete.



- [5] A script completion message will appear in the lower window pane of the Microsoft SSMS application. This will confirm that the **BikeStores** database has been installed.



- [6] In the Object Explorer pane, click on the refresh button (🔄) to refresh the list of database objects.



- [7] Expand the **Databases** item in the **Object Explorer** window pane. The **BikeStores** database should now appear in the expanded list of databases.

