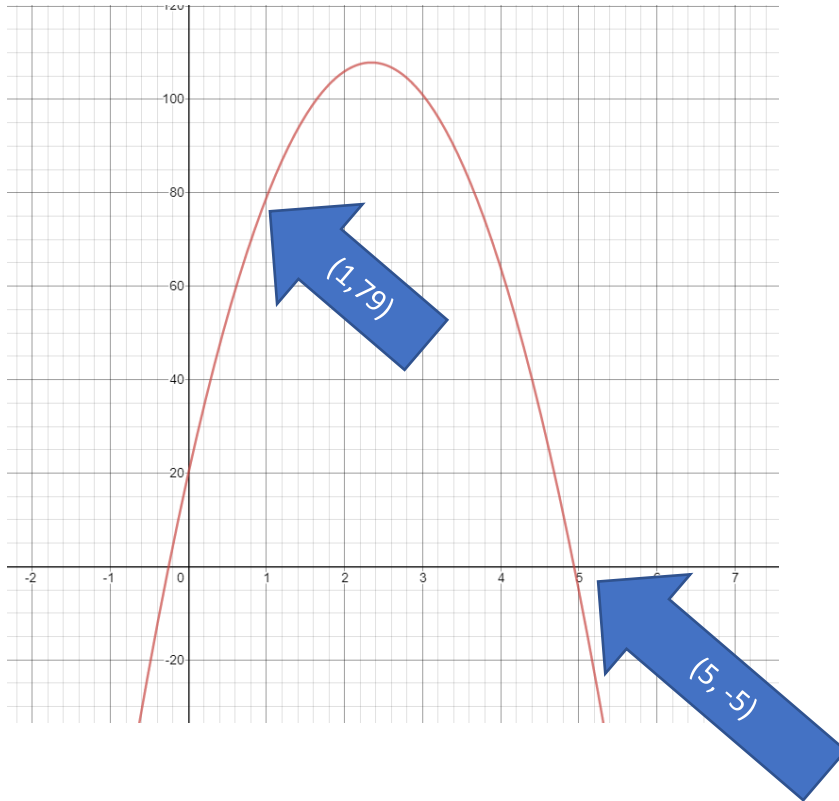


Unit 8 Discussion Example – Post 3: Reply to a Classmate

Hi Classmate! Your equation was $y = -16t^2 + 75t + 20$.

Here is the parabola from Post 1:



From Post 2, the calculated heights at

$t = 1$ second is $y = 79$ feet

$t = 5$ seconds is $y = -5$ feet

$t = 10$ seconds is $y = -830$ feet

You can see this is on the graph as (1,79) (5, -5) but the point (10, -830) is well down below the graph picture!

(10, -830)